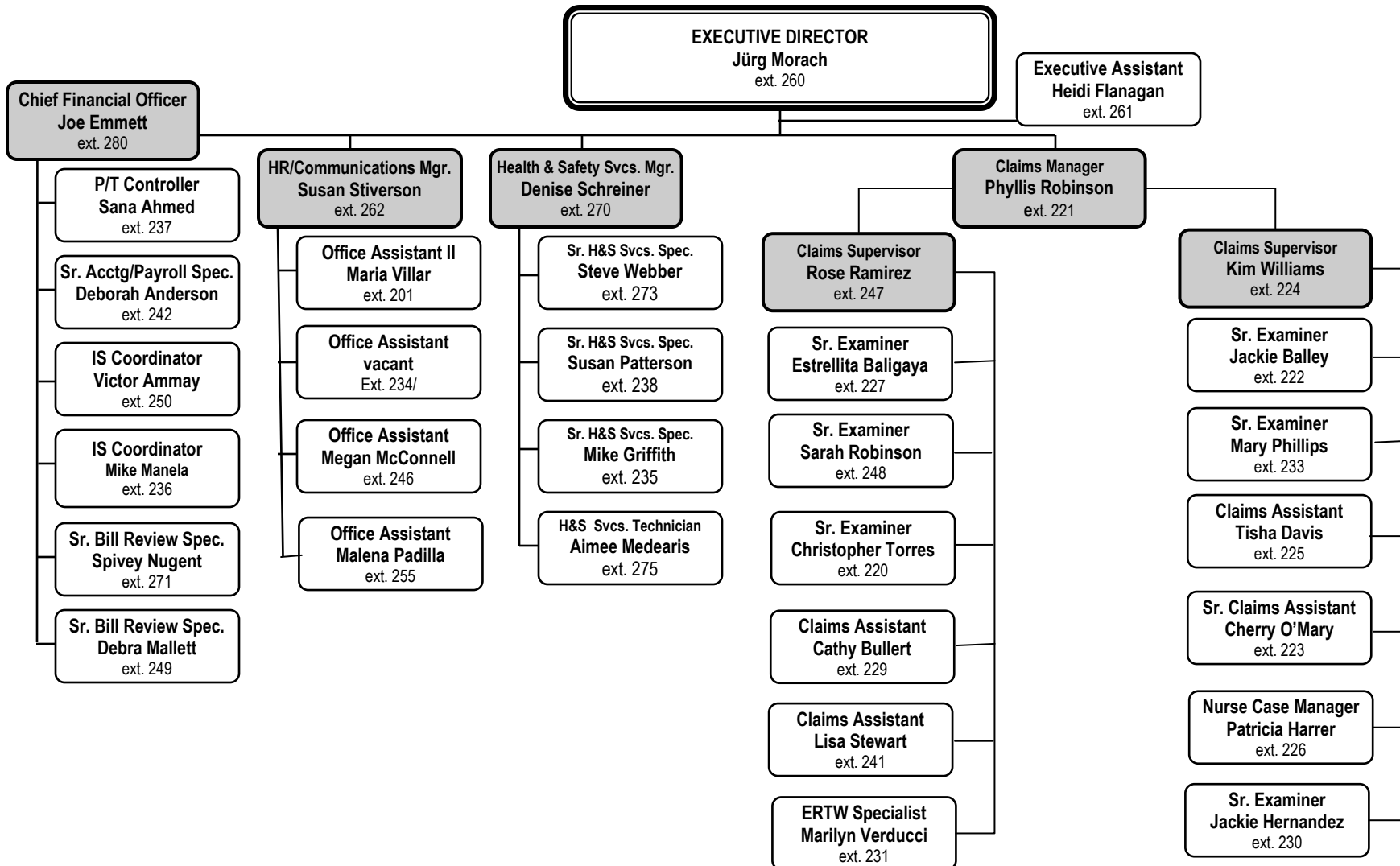




CONTRA COSTA COUNTY SCHOOLS INSURANCE GROUP ORGANIZATIONAL CHART

BOARD OF DIRECTORS

Acalanes, Antioch, Arcohe, Brentwood, Byron, Canyon, Castro Valley USD, CCCOE, CCCCD, John Swett, Knightsen, Lafayette, Liberty, Martinez, Moraga, Mt. Diablo, Oakley, Orinda, Pittsburg, San Ramon, Travis USD, Walnut Creek & West Contra Costa



Effective 9-14-20

550 Ellinwood Way ~ Pleasant Hill ~ CA ~ 94523

Main Office: 1-866-9-CCCSIG ~ General Fax: 925-692-1137 ~ E-mail: (first initial) (last name)@cccsig.org ~ www.cccsig.org

	Sr. Examiner/Examiner:	Claims Assistant:
Acalanes Union High	Mary Phillips Ext. 233	Cathy Bullert Ext. 229
Antioch Unified	Christopher Torres Ext. 220	Lisa Stewart/Tisha Davis Ext. 241/Ext. 225
Brentwood Union	Mary Phillips Ext. 233	Tisha Davis Ext. 225
Byron Union	Mary Phillips Ext. 233	Cathy Bullert Ext. 229
Canyon School	Mary Phillips Ext. 233	Lisa Stewart Ext. 241
CC Community College	Mary Phillips Ext. 233	Tisha Davis Ext. 225
CCC Office of Education	Jackie Hernandez Ext. 230	Tisha Davis Ext. 225
John Swett Unified	Mary Phillips Ext. 233	Lisa Stewart Ext. 241
Knightsen School	Jackie Hernandez Ext. 230	Tisha Davis Ext. 225
Lafayette School	Jackie Heremandez Ext. 230	Tisha Davis Ext. 225
Liberty Union High	Jackie Balley Ext. 222	Lisa Stewart Ext. 241
Martinez Unified	Mary Phillips Ext. 233	Tisha Davis Ext. 225
Moraga School	Jackie Hernandez Ext. 230	Tisha Davis Ext. 225
Mt. Diablo Unified	Estrellita Baligaya Ext. 227	Cathy Bullert Ext. 229
Oakley Union Elementary	Jackie Hernandez Ext. 230	Tisha Davis Ext. 225
Orinda Union	Sarah Robinson Ext. 248	Cathy Bullert Ext. 229
Pittsburg Unified	Jackie Hernandez Ext. 230	Tisha Davis Ext. 225
San Ramon Valley Unified	Jackie Balley Ext. 222	Lisa Stewart Ext. 241
Walnut Creek	Mary Phillips Ext. 233	Tisha Davis Ext. 225
West Contra Costa Unified	Sarah Robinson/Estrellita Baligaya Ext. 248/Ext. 227	Cathy Bullert Ext. 229

ALL DISTRICTS: Marilyn Verducci—Future Medical Low, Cherry O’Mary—Future Medical Medium