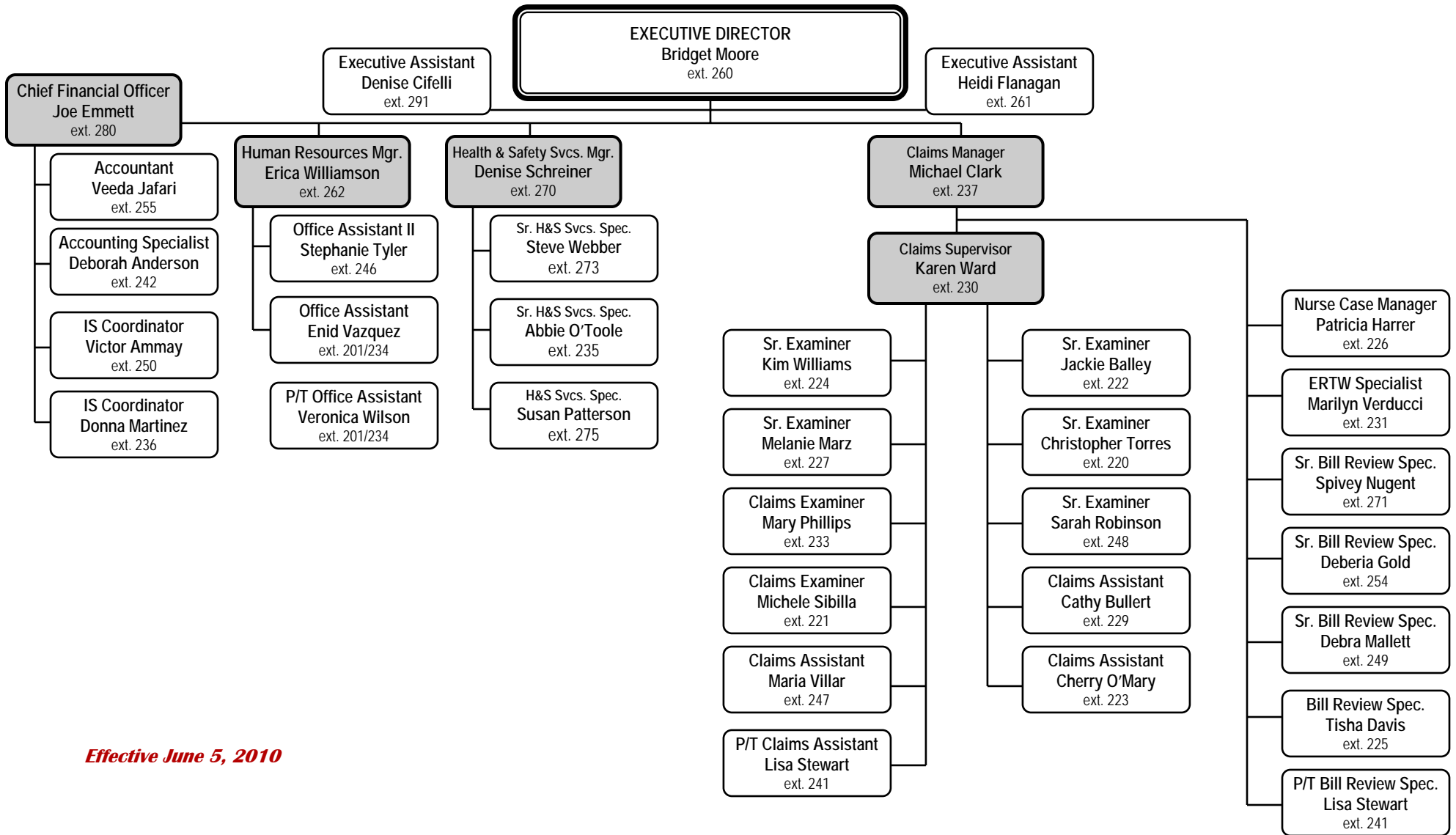




# CONTRA COSTA COUNTY SCHOOLS INSURANCE GROUP ORGANIZATIONAL CHART

## BOARD OF DIRECTORS

Acalanes\*, Antioch, Brentwood\*, Byron, Canyon, Castro Valley USD, CCCOE\*, CCCCD, John Swett, Knightsen, Lafayette\*, Liberty, Martinez, Moraga\*, Mt. Diablo, Oakley, Orinda, Pittsburg, San Ramon\*, St. Helena, Walnut Creek\* & West Contra Costa\*



**Effective June 5, 2010**

550 Ellinwood Way ~ Pleasant Hill ~ CA ~ 94523

Main Office: 1-866-9-CCCSIG ~ General Fax: 925-692-1137 ~ E-mail: (first initial) (last name)@cccsig.org ~ [www.cccsig.org](http://www.cccsig.org)

	Sr. Examiner/Examiner:	Claims Assistant:
<b>Acalanes Union High</b>	<b>Melanie Marz</b> Ext. 227	<b>Maria Villar</b> Ext. 247
<b>Antioch Unified</b>	<b>Michele Sibilla</b> Ext. 220	<b>Cathy Bullert</b> Ext. 229
<b>Brentwood Union</b>	<b>Mary Phillips</b> Ext. 233	<b>Maria Villar</b> Ext. 247
<b>Byron Union</b>	<b>Michele Sibilla</b> Ext. 220	<b>Maria Villar</b> Ext. 247
<b>Canyon School</b>	<b>Mary Phillips</b> Ext. 233	<b>Maria Villar</b> Ext. 247
<b>CC Community College</b>	<b>Mary Phillips</b> Ext. 233	<b>Cathy Bullert</b> Ext. 229
<b>CCC Office of Education</b>	<b>Kim Williams</b> Ext. 224	<b>Cathy Bullert</b> Ext. 229
<b>John Swett Unified</b>	<b>Michele Sibilla</b> Ext. 220	<b>Maria Villar</b> Ext. 247
<b>Knightsen School</b>	<b>Jackie Balley</b> Ext. 222	<b>Cathy Bullert</b> Ext. 229
<b>Lafayette School</b>	<b>Jackie Balley</b> Ext. 222	<b>Maria Villar</b> Ext. 247
<b>Liberty Union High</b>	<b>Jackie Balley</b> Ext. 222	<b>Maria Villar</b> Ext. 247
<b>Martinez Unified</b>	<b>Kim Williams</b> Ext. 224	<b>Cathy Bullert</b> Ext. 229
<b>Moraga School</b>	<b>Mary Phillips</b> Ext. 233	<b>Maria Villar</b> Ext. 247
<b>Mt. Diablo Unified</b>	<b>All Examiners</b>	<b>Maria Villar</b> Ext. 247
<b>Oakley Union Elementary</b>	<b>Sarah Robinson</b> Ext. 248	<b>Maria Villar</b> Ext. 247
<b>Orinda Union</b>	<b>Michele Sibilla</b> Ext. 220	<b>Cathy Bullert</b> Ext. 229
<b>Pittsburg Unified</b>	<b>Kim Williams</b> Ext. 224	<b>Cathy Bullert</b> Ext. 229
<b>San Ramon Valley Unified</b>	<b>Jackie Balley</b> Ext. 222	<b>Cherry O'Mary</b> Ext. 223
<b>Walnut Creek</b>	<b>Mary Phillips</b> Ext. 233	<b>Maria Villar</b> Ext. 247
<b>West Contra Costa Unified</b>	<b>Sarah Robinson/Melanie Marz</b> Ext. 248/Ext. 227	<b>Maria Villar</b> Ext. 247

ALL DISTRICTS: Christopher Torres —Future Medical Medium/High; Marilyn Verducci—Future Medical Low